



# **PiNNACLE** **For PEAK Yields**



**United Oilseeds**  
THE LEADING BREAK CROP SPECIALIST

**AHDB**

RECOMMENDED

## **Conventional Oilseed Rape**

**Pi Pinnacle is the highest yielding conventional variety in all AHDB regions and is fully Recommended for all regions in the UK.**

**Pi Pinnacle was bred in the Cotswolds by Mike Pickford, the last independent oilseed rape breeder. Focusing on keeping the plant green and building yield at the end of the season. By selecting a high number of pods per plant, a high number of seeds in a pod and large seeds he has been able to increase crop yields.**

**Data from the Official trials shows that the vigour and establishment of Pi Pinnacle is as good as Campus with a 5% increase in yield.**

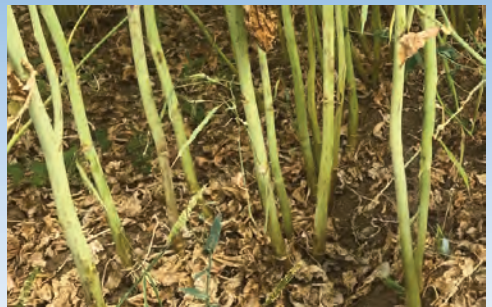
**Pi Pinnacle has large seed and will therefore be packed in 2 million seed bags treated with Integral Pro and Syllas for optimum establishment.**

**Pi Pinnacle is a medium height variety with good agronomic characteristics. It has good seedling vigour in the autumn helped further by the seed treatments.**

**Pi Pinnacle is late to flower, reducing the risk of flower loss due to late frosts. However it is still medium in grain maturity allowing crops to be harvested before first wheats are ready to cut.**

**The disease resistance of Pi Pinnacle is better than Campus and 2023 data on Verticillium resistance shows it to be as good as Catana the resistant control variety.**

Pictures from AHDB Disease Trial 2023



Pi Pinnacle showing clean stems



AHDB disease control

## Winter Oilseed Rape Recommended List 2024/25

	Variety type	Gross output (%) - UK	Gross output (%) - East/West	Gross output (%) - North	Treated seed yield (%) - UK	Treated seed yield (%) - East/West	Treated seed yield (%) - North	Oil content (%)
<b>Conventional Varieties</b>								
<b>Pi Pinnacle (UK)</b>	<b>Conv</b>	<b>102</b>	<b>103</b>	<b>101</b>	<b>104</b>	<b>104</b>	<b>102</b>	<b>44.4</b>
Tom (UK)	Conv	102	101	102	101	101	102	45.2
Annika (E/W)	Conv	99	99	98	99	99	98	44.9
Acacia (UK)	Conv	98	98	99	98	98	99	44.9
Aspire (North) Conventional control	Conv	96	96	98	96	95	98	45.2
Amarone (North)	Conv	95	94	100	96	95	100	44.7
Ambassador (EW) Hybrid control	Hybrid	104	104	101	104	104	102	44.7
Aurelia (UK) Hybrid control	Hybrid	103	103	102	103	103	103	44.8
DK Expansion (no longer RL) Hybrid control	Hybrid	98	98	98	98	98	98	45.2
Mean of controls (t/ha)		5.1	5.0	6.0	4.8	4.7	5.5	45.1

## Winter Oilseed Rape Recommended List 2024/25

	Resistance to lodging (1–9)	Stem stiffness (1–9)	Height (cm)	Earliness of flowering (1–9)	Earliness of maturity (1–9)	Resistance to light leaf spot (1–9)	Resistance to stem canker (1–9)
<b>Conventional Varieties</b>							
<b>Pi Pinnacle (UK)</b>	<b>8</b>	<b>9</b>	<b>148</b>	<b>5</b>	<b>5</b>	<b>7</b>	<b>4</b>
Tom (UK)	8	9	140	7	5	7	5
Annika (E/W)	8	9	142	6	4	7	5
Acacia (UK)	8	8	138	6	5	7	5
Aspire (North)	8	8	134	7	5	7	5
Amarone (North)	8	8	136	7	5	7	4
Ambassador (EW) Hybrid control	8	8	146	7	6	7	6
Aurelia (UK) Hybrid control	8	7	143	7	5	7	5
DK Expansion (no longer RL) Hybrid control	8	8	152	6	5	6	5

Source: AHDB Recommended List 2024/25. Full results for all Recommended varieties available at [//ahdb.org.uk](https://ahdb.org.uk)



# Grainseed

Unit 3, Airfield Industrial Park, Langton Green, Eye, Suffolk IP23 7HN  
t: 01379 871073 f: 01379 871038 e: [info@grainseed.co.uk](mailto:info@grainseed.co.uk)